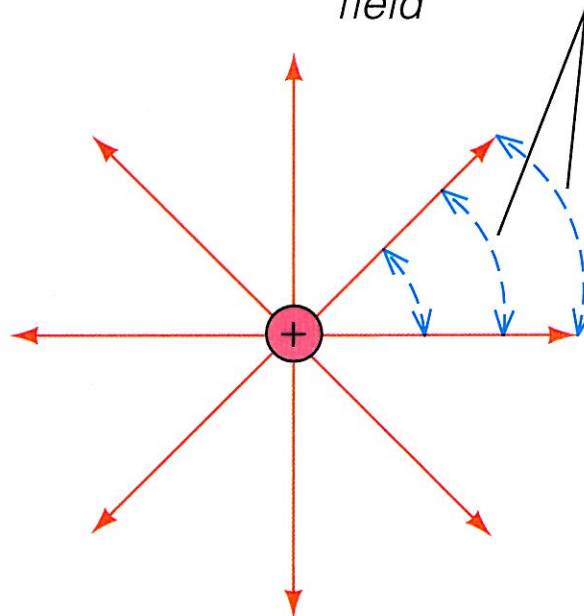
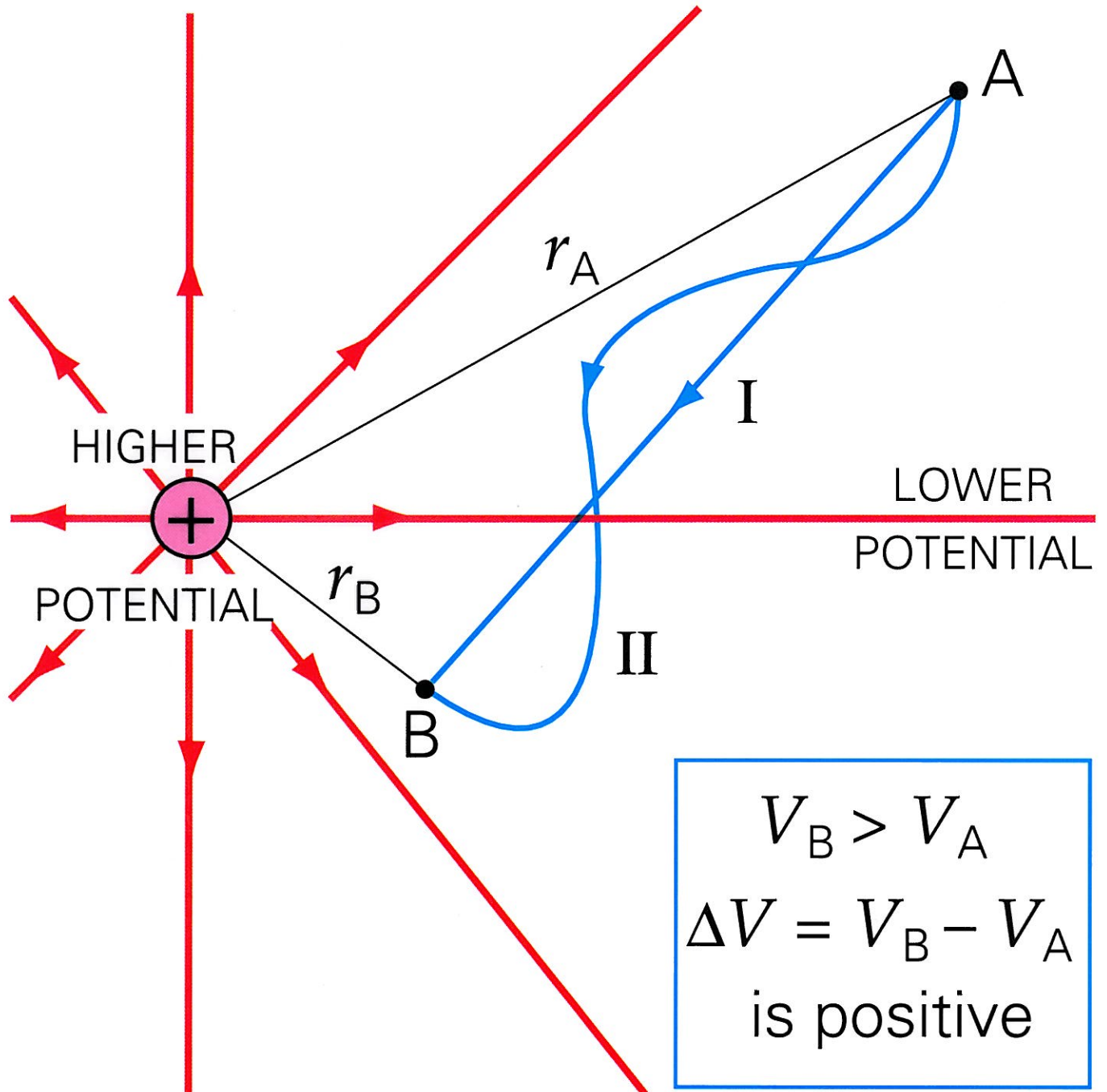


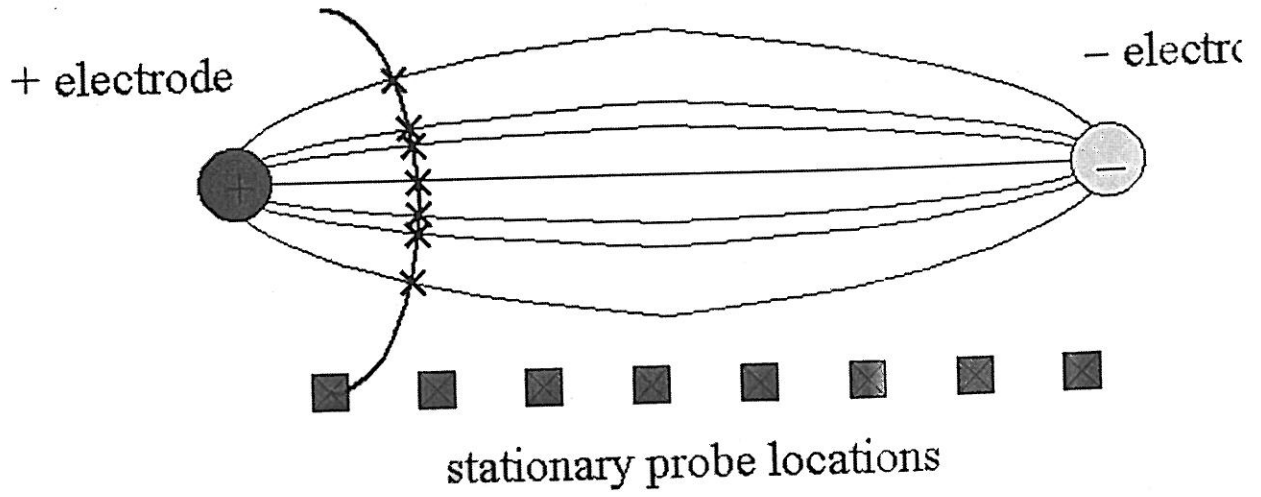
(a) Electric field vectors

The closer together the lines of force, the stronger the field



(b) Electric field lines (lines of force)





× locations of zero current with moveable probe

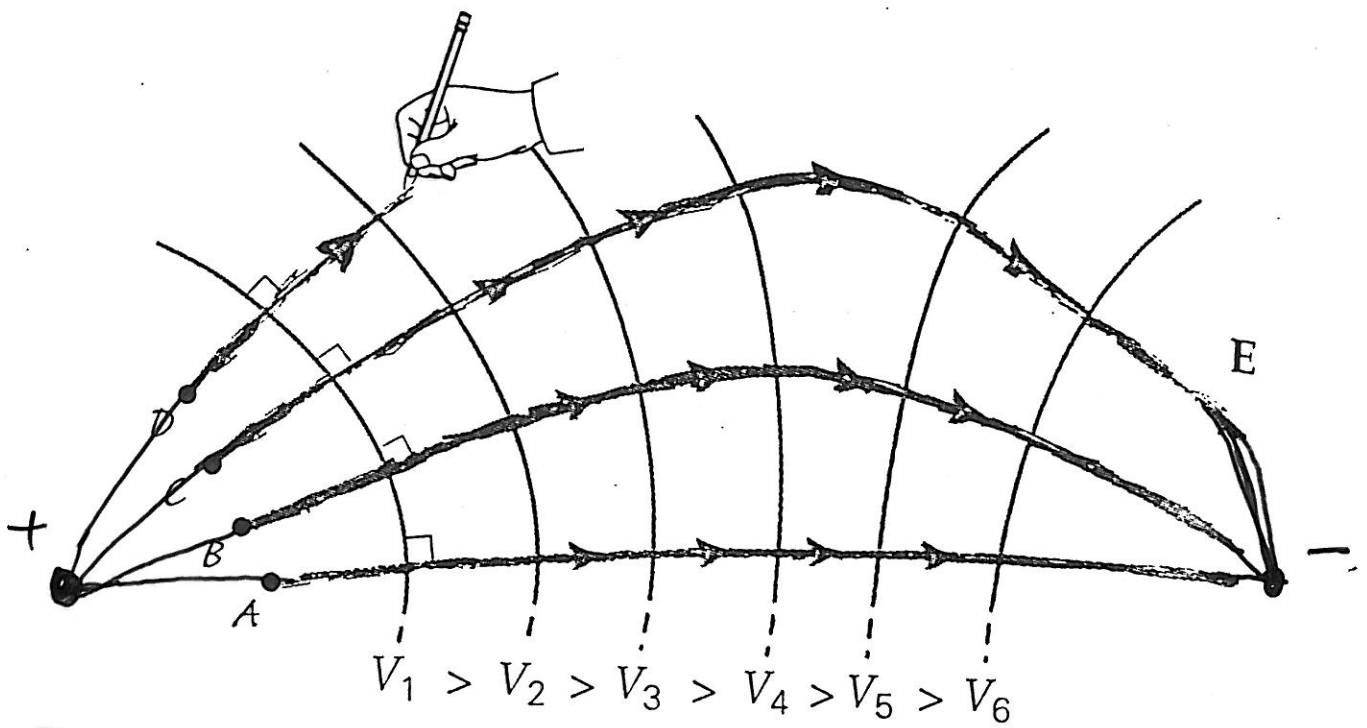


FIGURE 2 Mapping the electric field from equipotentials Start at a convenient point and trace a line that crosses each equipotential at a right angle. Repeat the process as often as needed to reveal the field pattern, adding arrows to indicate the direction of the field lines from high to low potential.