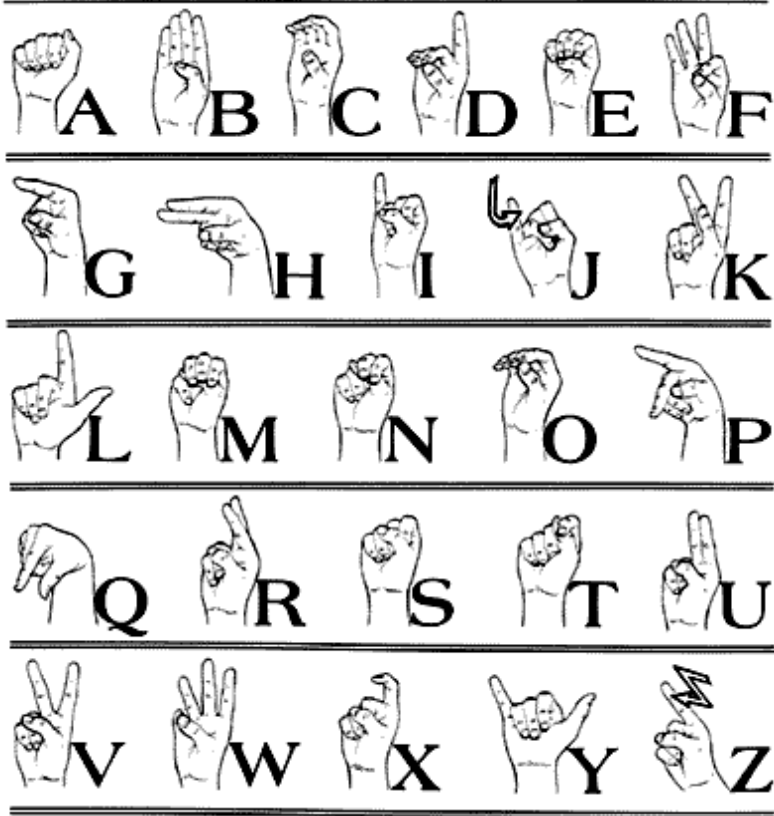
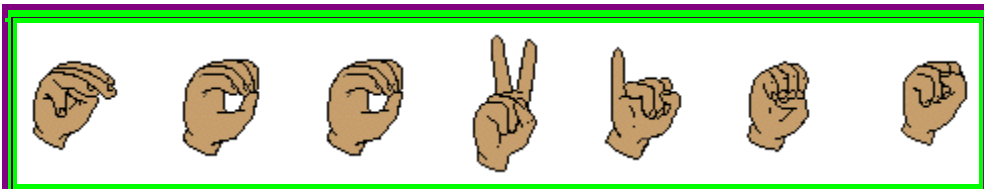


Manual Alphabet
Center for Disability Information & Referral

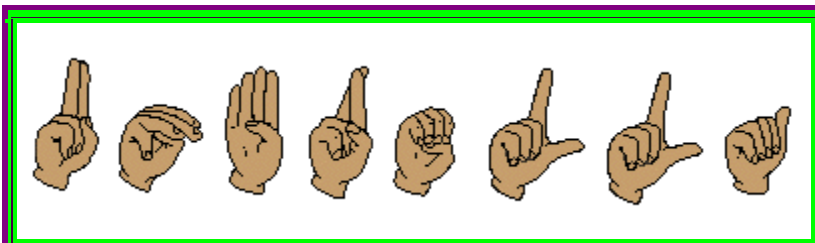


1. Where do cows go on Saturdays?



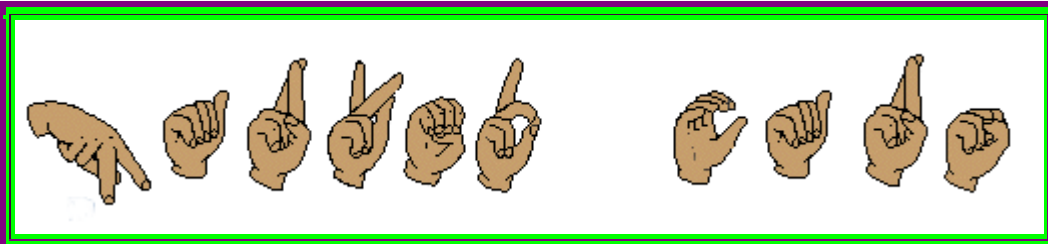
ANSWER: to the *****

2. What goes up when the rain comes down?



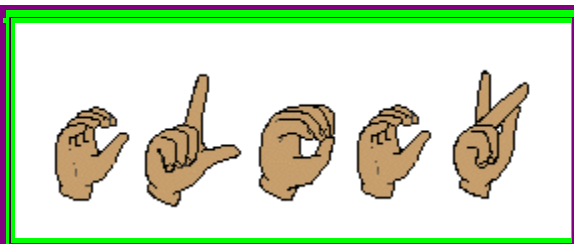
ANSWER: an *****

3. What does a lazy dog do for fun?



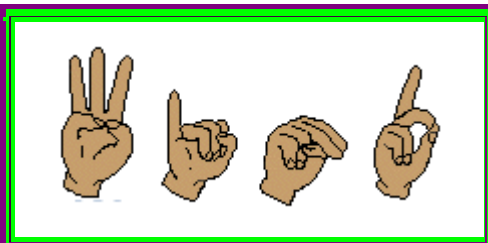
ANSWER: chases ***** **

4. I have a face, yet no senses. Time is of the essence, but I don't really care.



ANSWER: a *****

5. Voiceless it cries, Wingless it flutters, Toothless bites, Mouthless mutters.



ANSWER: the ****

6. My life is often a volume of grief, Your help is needed to turn a new leaf. Stiff is my spine and my body is pale, But I'm always ready to tell a tale.

