

Figure 1. Survey locations in the southeast Florida region from northern Biscayne National Park to southwest of Key West.

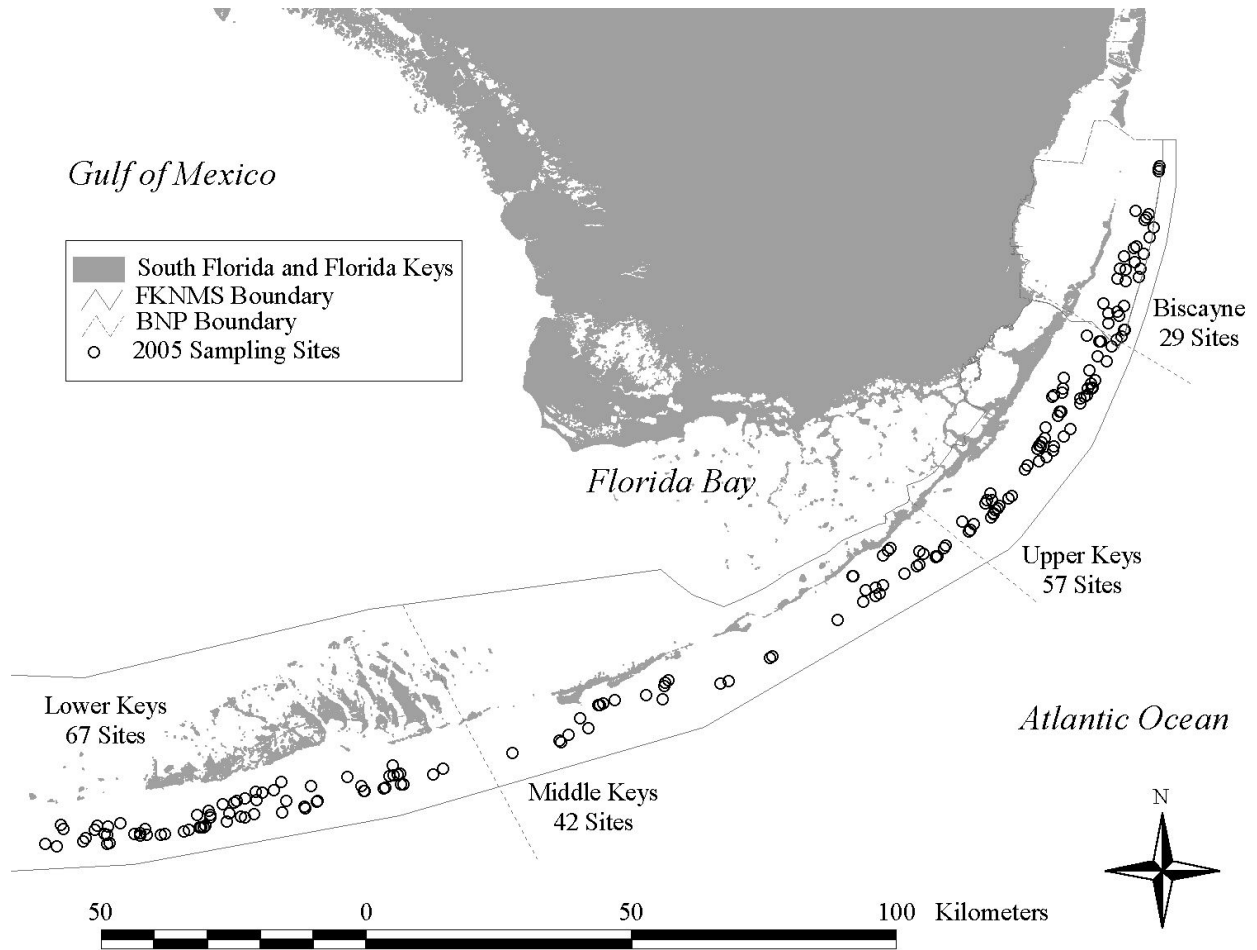


Figure 2. Survey locations in the lower Florida Keys region by habitat type.

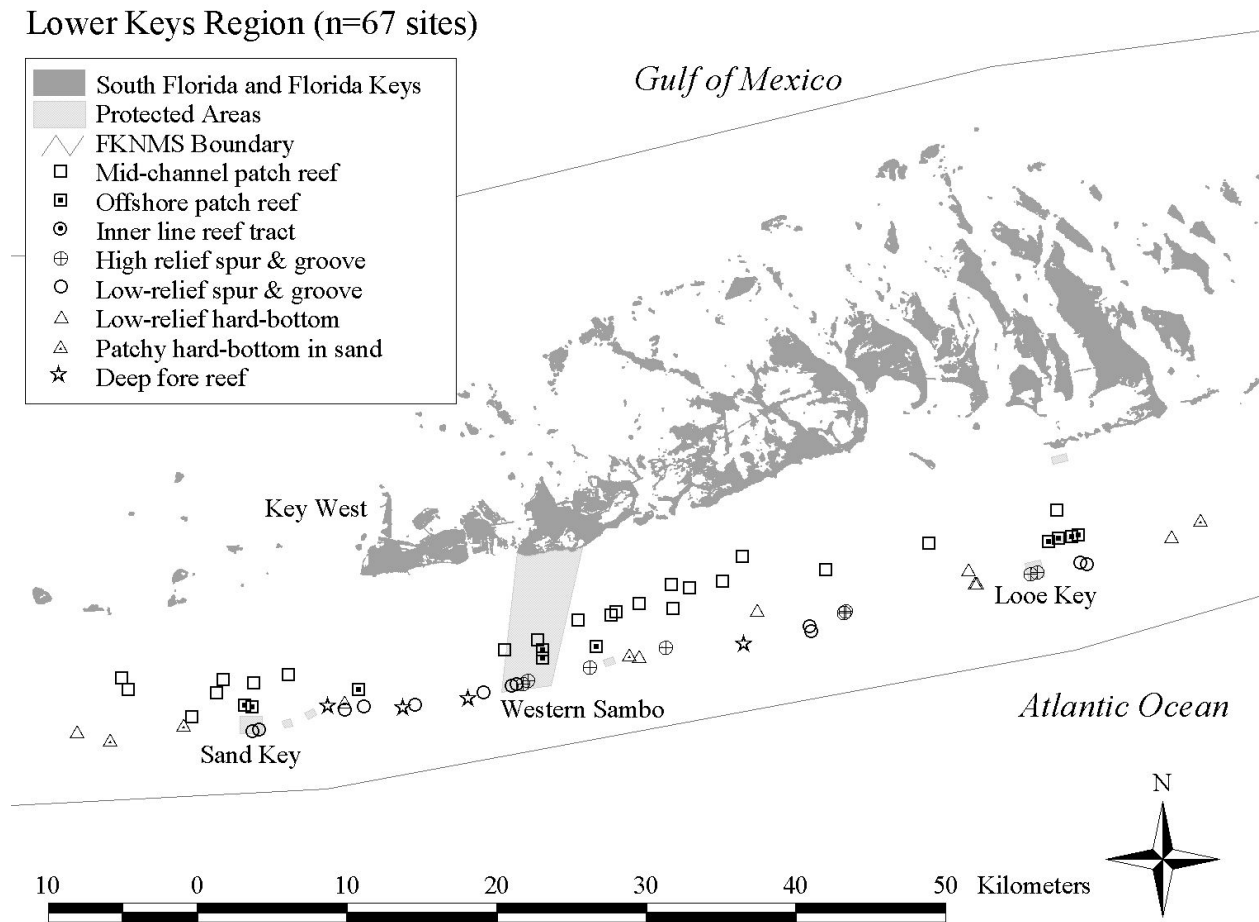


Figure 3. Survey locations in the middle Keys region by habitat type.

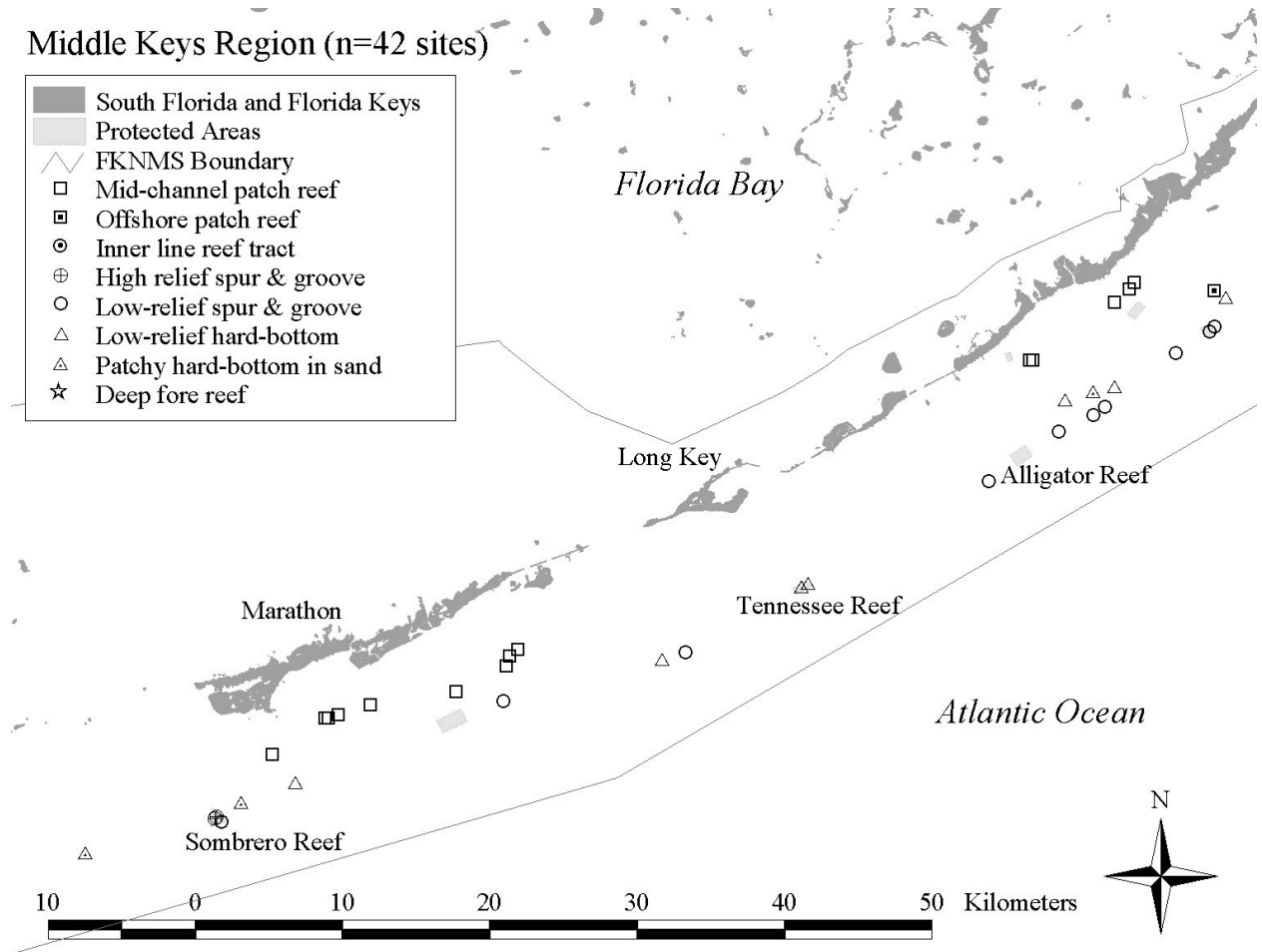


Figure 4. Survey locations in the upper Keys region by habitat type.

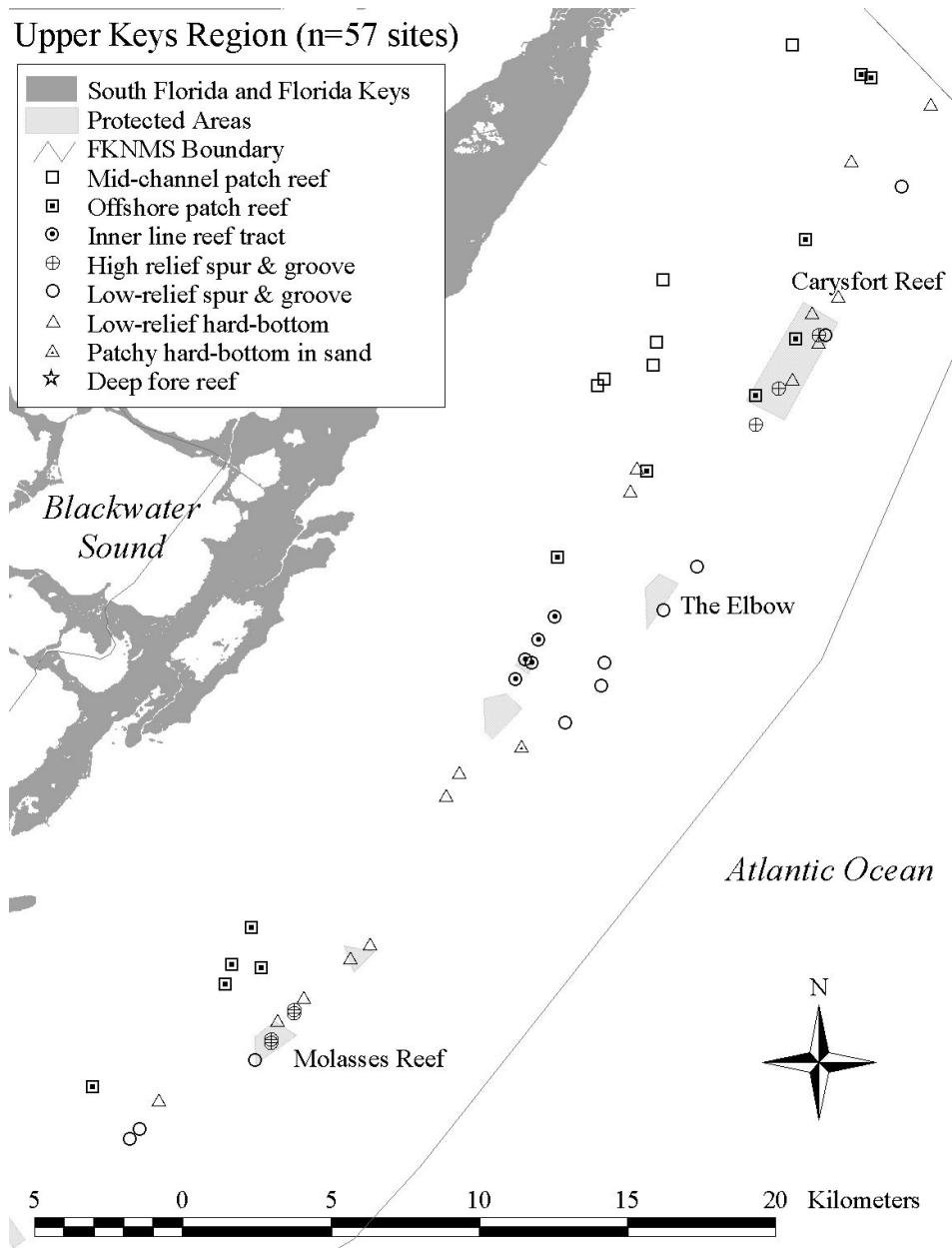


Figure 5. Survey locations in Biscayne National Park by habitat type.

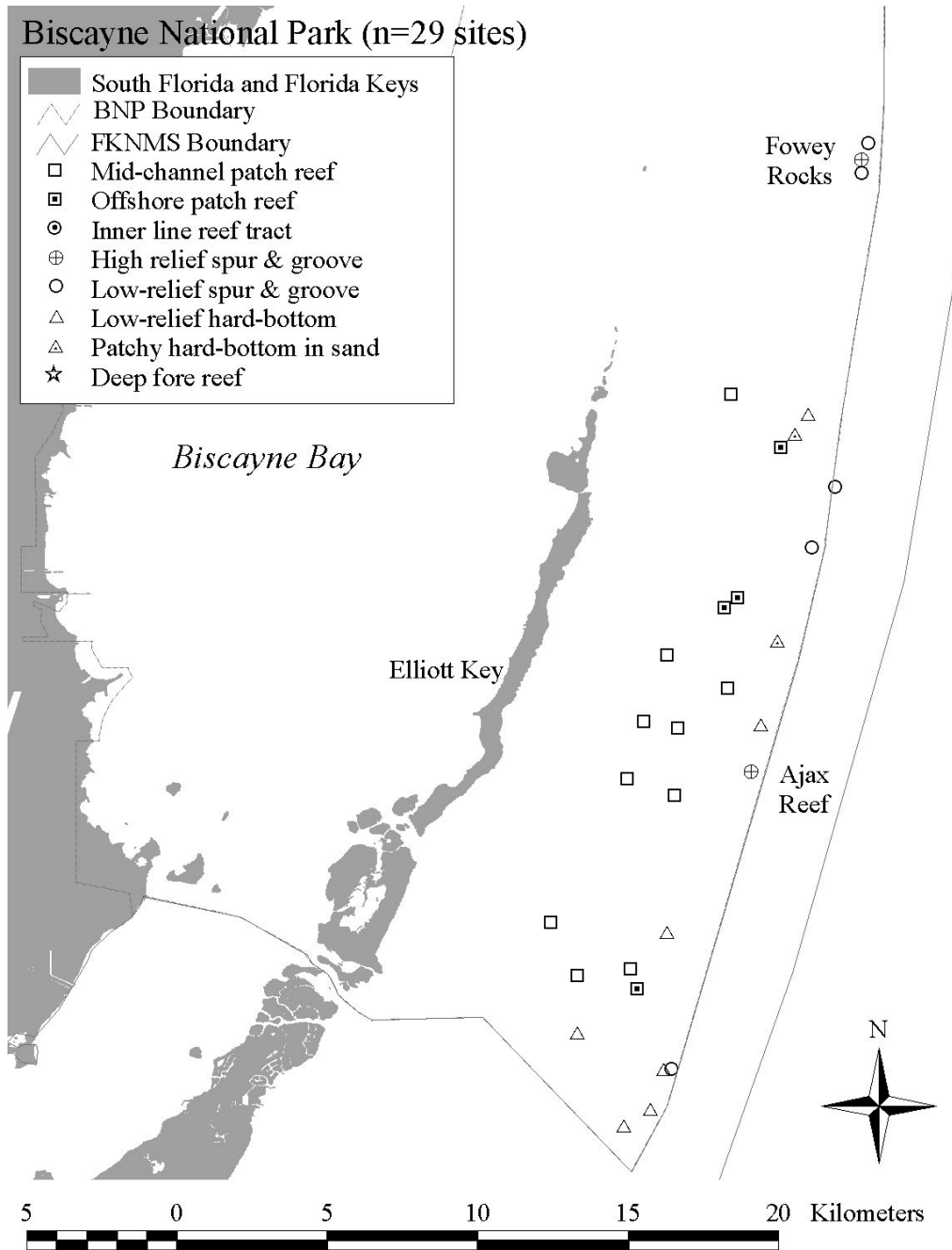
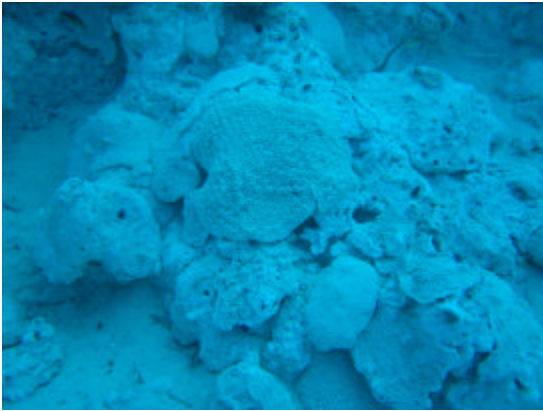


Figure 6. Scouring and sediment removal after Hurricane Dennis observed during July 13, 2005, approximately four days after Hurricane Dennis passed close to Key West.

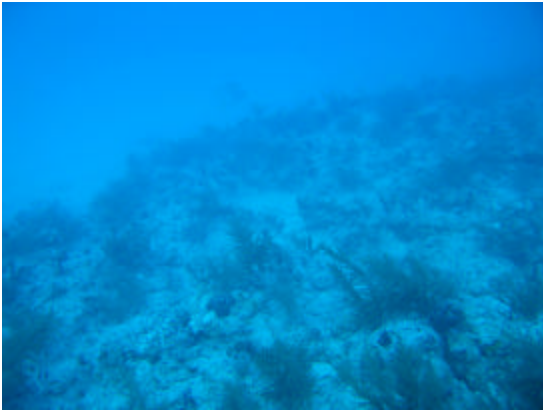
Site #91, East of Looe Key, 15-19 m
24° 33.035'N, 81° 22.539'W



Site #91, East of Looe Key, 15-19 m
24° 33.035'N, 81° 22.539'W



Site #91, East of Looe Key, 15-19 m
24° 33.035'N, 81° 22.539'W



Site #92, East of Looe Key, 10-10.5 m
24° 33.097'N, 81° 22.815'W

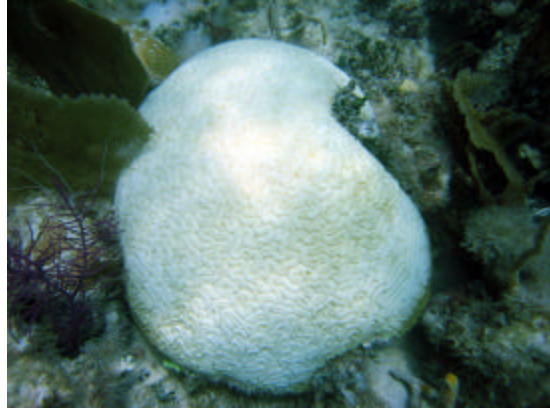


Figure 7. Coral bleaching documented in Biscayne National Park during August-September 2005.

Colonial zoanthid *Palythoa*
Site #168, Fowey Rocks, 5-7 m
25° 35.596'N, 81° 05.777'W



Diploria labyrinthiformis
Site #184, SE of Caesar Creek, 3-5 m
25° 21.895'N, 80° 11.332'W



Acropora cervicornis
Site #184, SE of Caesar Creek, 3-5 m
25° 21.895'N, 80° 11.332'W



Siderastrea siderea
Site #184, SE of Caesar Creek, 3-5 m
25° 21.895'N, 80° 11.332'W

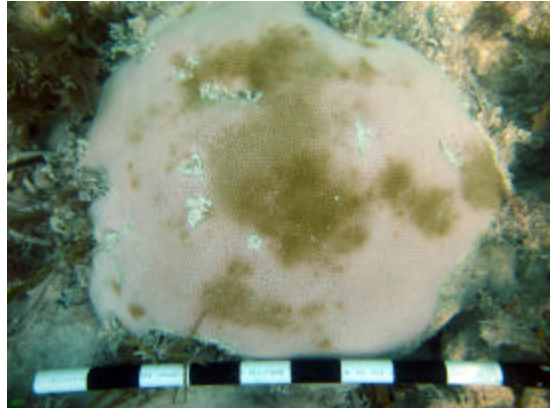
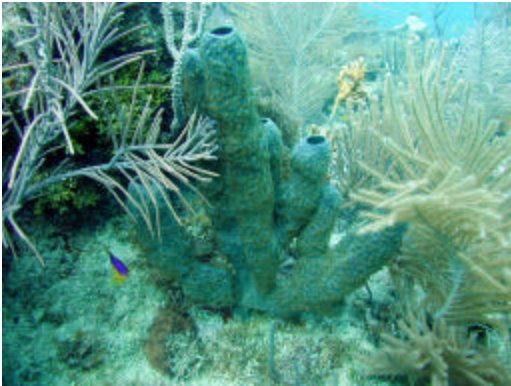
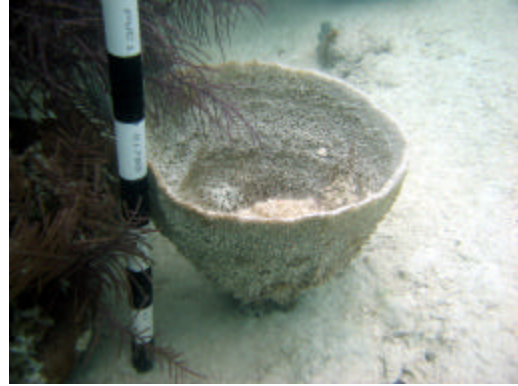


Figure 8. Underwater photographs of targeted sponges measured for abundance and size (volume) during May-October 2005.

Tube sponge (*Callyspongia vaginalis*)



Stinker vase sponge (*Ircinia campana*)



Vase/tube sponge (*Niphates digitalis*)



Stinker sponge (*I. felix*)



Woody barrel sponge (*Xestospongia muta*)



Bahamian loggerhead sponge (*I. strobilina*)

