

Chapter 4 Review Questions

Macrolevel Opinion

Which % range indicates a **conflict** distribution?

- A. > 20 but < 80
- B. > 30 but < 70
- C. > 40 but < 60
- D. All of the above
- E. None of the above

TABLE 4.1 | Opinion about Spending Too Little, About Right, or Too Much on Selected Federal Programs

	Spend Too Little	About Right	Spend Too Much
Health care ^a	76%	19%	05%
The environment ^a	68	24	08
Police and law enforcement ^a	53	38	09
Social Security ^b	63	30	06
Education ^c	71	23	03
Military and defense ^a	24	32	44
Retirement benefits ^b	64	28	08
Unemployment benefits ^b	35	49	15
Culture and Arts ^a	23	48	29
Welfare programs ^a	26	37	37
Poor people ^a	70	22	08
Foreign aid ^a	12	28	60
Space exploration ^a	13	49	38

Sources: ^aGeneral Social Survey (2008); ^bGeneral Social Survey (2006).

Sampling Error Margins

- Error margin = $\pm (0.98 / \sqrt{\text{sample size}}) \times 100$
- GSS 2006 = $\pm (0.98 / \sqrt{4510}) \times 100 = \pm 1.5\%$
- GSS 2008 = $\pm (0.98 / \sqrt{3559}) \times 100 = \pm 1.6\%$
- GSS 2010 = $\pm (0.98 / \sqrt{4901}) \times 100 = \pm 1.4\%$
- ANES 2000 = $\pm (0.98 / \sqrt{1807}) \times 100 = \pm 2.3\%$
- ANES 2004 = $\pm (0.98 / \sqrt{1212}) \times 100 = \pm 2.8\%$
- ANES 2008 = $\pm (0.98 / \sqrt{2323}) \times 100 = \pm 2.0\%$

A **consensus** of the 2008 public favored increased spending for:

- A. Health care (76%)
- B. The environment (68%)
- C. Education (71%)
- D. All of the above
- E. None of the above

TABLE 4.2 | Opinion Distributions on Social Issues (Percentage of Opinion-Holders)

		Liberal	Conservative
Marijuana	Do you think marijuana should be made legal or not? ^a	33 (yes)	67 (no)
Gay rights	Should there be laws to protect homosexuals against job discrimination? ^b	71 (yes)	29 (no)
Pornography	Should there be laws against the distribution of pornography to adults? ^c	61 (no)	39 (yes)
Sex education	Do you favor sex education in the public schools? ^c	88 (yes)	12 (no)
Prayer in school	Should prayer be permitted in public schools? ^d	29 (no)	69 (yes)
Gun ownership	Right to own guns more important than controlling gun ownership? ^e	52 (no)	48 (yes)

Sources: ^aGallup Poll (2009); ^bANES (2008); ^cGSS (2006); ^dGSS (2004); ^eTew (2009).

Figure 4.1
Private versus government health insurance

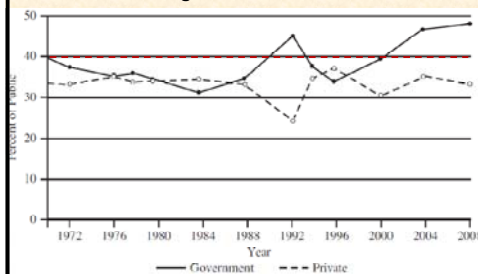


Figure 4.2
Support for school integration, open housing, and busing to integrate public schools

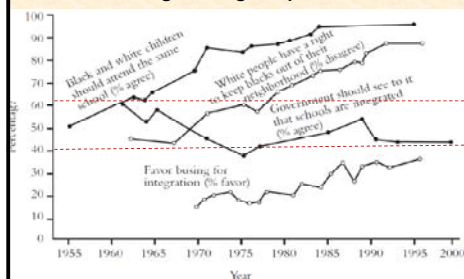


Figure 4.3
"Do you think it would be best for the future of this country if we take an active part in world affairs, or if we stayed out of world affairs?"

