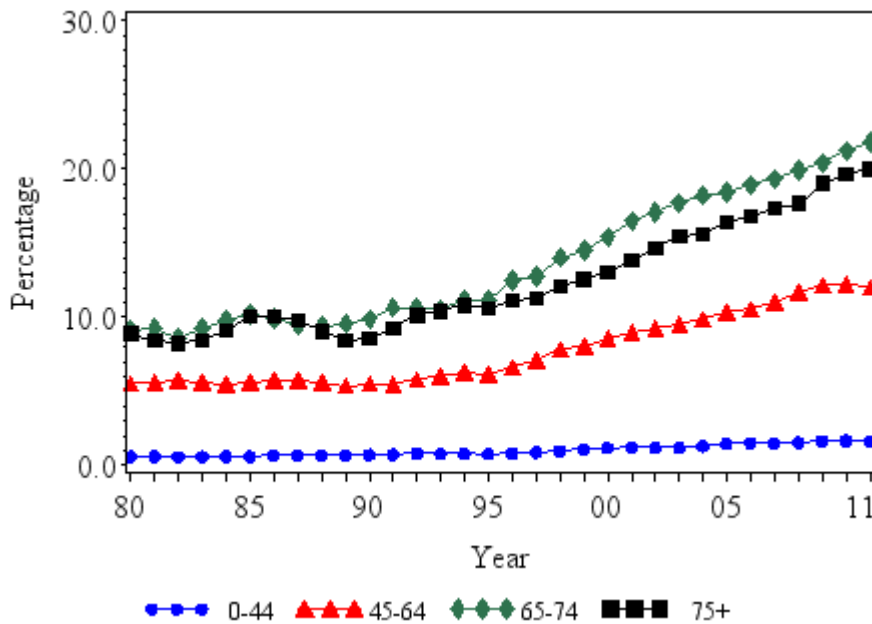




## Percentage of Civilian, Noninstitutionalized Population with Diagnosed Diabetes, by Age, United States, 1980–2011

From 1980 through 2011, the percentage of people with diagnosed diabetes increased 167% (from 0.6% to 1.6%) for those aged 0–44 years, 118% (from 5.5% to 12.0%) for those aged 45–64 years, 140% (9.1% to 21.8%) for those aged 65–74 years, and 125% (8.9% to 20.0%) for those aged 75 years and older. In general, throughout the time period, the percentage of people with diagnosed diabetes increased among all age groups. In 2011, the percentage of diagnosed diabetes among people aged 65–74 (21.8%) was more than 13 times that of people younger than 45 years of age (1.6%).



Year	Age							
	0–44		45–64		65–74		75+	
	Percentage	Std Error	Percentage	Std Error	Percentage	Std Error	Percentage	Std Error
1980	0.6	0.03	5.5	0.21	9.1	0.38	8.9	0.60
1981	0.6	0.04	5.6	0.20	9.2	0.40	8.4	0.49
1982	0.6	0.05	5.8	0.22	8.6	0.53	8.3	0.57
1983	0.6	0.05	5.6	0.23	9.3	0.48	8.5	0.59
1984	0.6	0.04	5.4	0.23	9.8	0.51	9.1	0.59
1985	0.6	0.05	5.6	0.26	10.2	0.61	10.0	0.71

<b>1986</b>	0.7	0.05	5.7	0.26	9.9	0.62	10.1	0.71
<b>1987</b>	0.7	0.05	5.8	0.28	9.5	0.64	9.8	0.72
<b>1988</b>	0.7	0.05	5.6	0.23	9.4	0.53	9.0	0.58
<b>1989</b>	0.7	0.04	5.4	0.24	9.6	0.50	8.4	0.54
<b>1990</b>	0.7	0.05	5.5	0.24	9.9	0.45	8.6	0.60
<b>1991</b>	0.8	0.05	5.4	0.25	10.7	0.49	9.3	0.59
<b>1992</b>	0.8	0.05	5.8	0.26	10.6	0.51	10.1	0.66
<b>1993</b>	0.8	0.05	6.0	0.26	10.5	0.54	10.4	0.63
<b>1994</b>	0.8	0.05	6.3	0.26	11.1	0.53	10.8	0.64
<b>1995</b>	0.8	0.05	6.2	0.27	11.1	0.59	10.6	0.69
<b>1996</b>	0.8	0.05	6.6	0.25	12.5	0.58	11.1	0.63
<b>1997</b>	0.9	0.05	7.1	0.23	12.8	0.52	11.3	0.56
<b>1998</b>	1.0	0.04	7.8	0.18	14.0	0.41	12.1	0.42
<b>1999</b>	1.1	0.04	8.1	0.19	14.5	0.39	12.6	0.42
<b>2000</b>	1.2	0.04	8.6	0.21	15.4	0.42	13.0	0.42
<b>2001</b>	1.2	0.04	9.0	0.21	16.5	0.41	13.9	0.44
<b>2002</b>	1.2	0.04	9.3	0.22	17.1	0.42	14.6	0.45
<b>2003</b>	1.2	0.04	9.5	0.20	17.7	0.49	15.4	0.47
<b>2004</b>	1.3	0.05	9.9	0.19	18.2	0.54	15.6	0.47
<b>2005</b>	1.5	0.06	10.3	0.22	18.4	0.50	16.4	0.50
<b>2006</b>	1.5	0.06	10.5	0.23	18.9	0.52	16.8	0.55
<b>2007</b>	1.5	0.07	11.0	0.26	19.3	0.52	17.3	0.60
<b>2008</b>	1.6	0.07	11.7	0.27	19.9	0.51	17.7	0.60
<b>2009</b>	1.7	0.07	12.2	0.28	20.4	0.55	19.0	0.57
<b>2010</b>	1.7	0.06	12.2	0.27	21.2	0.51	19.6	0.51
<b>2011</b>	1.6	0.07	12.2	0.29	21.8	0.60	20.0	0.60

[Methods and Limitations \(methods.htm\)](#)

[Detailed Data Tables \(menuage.htm\)](#)

**Data Source:** Centers for Disease Control and Prevention, National Center for Health Statistics, Division of Health Interview Statistics, data from the National Health Interview Survey. Statistical analysis by the Centers for Disease Control and Prevention, National Center for Chronic Disease Prevention and Health Promotion, Division of Diabetes Translation.

---

Page last reviewed: November 19, 2013

Page last updated: March 28, 2013

Content source: [Division of Diabetes Translation](#)

[National Center for Chronic Disease Prevention and Health Promotion](#)

---

Centers for Disease Control and Prevention 1600 Clifton Rd. Atlanta, GA 30333, USA  
800-CDC-INFO (800-232-4636) TTY: (888) 232-6348 - [Contact CDC-INFO](#)

