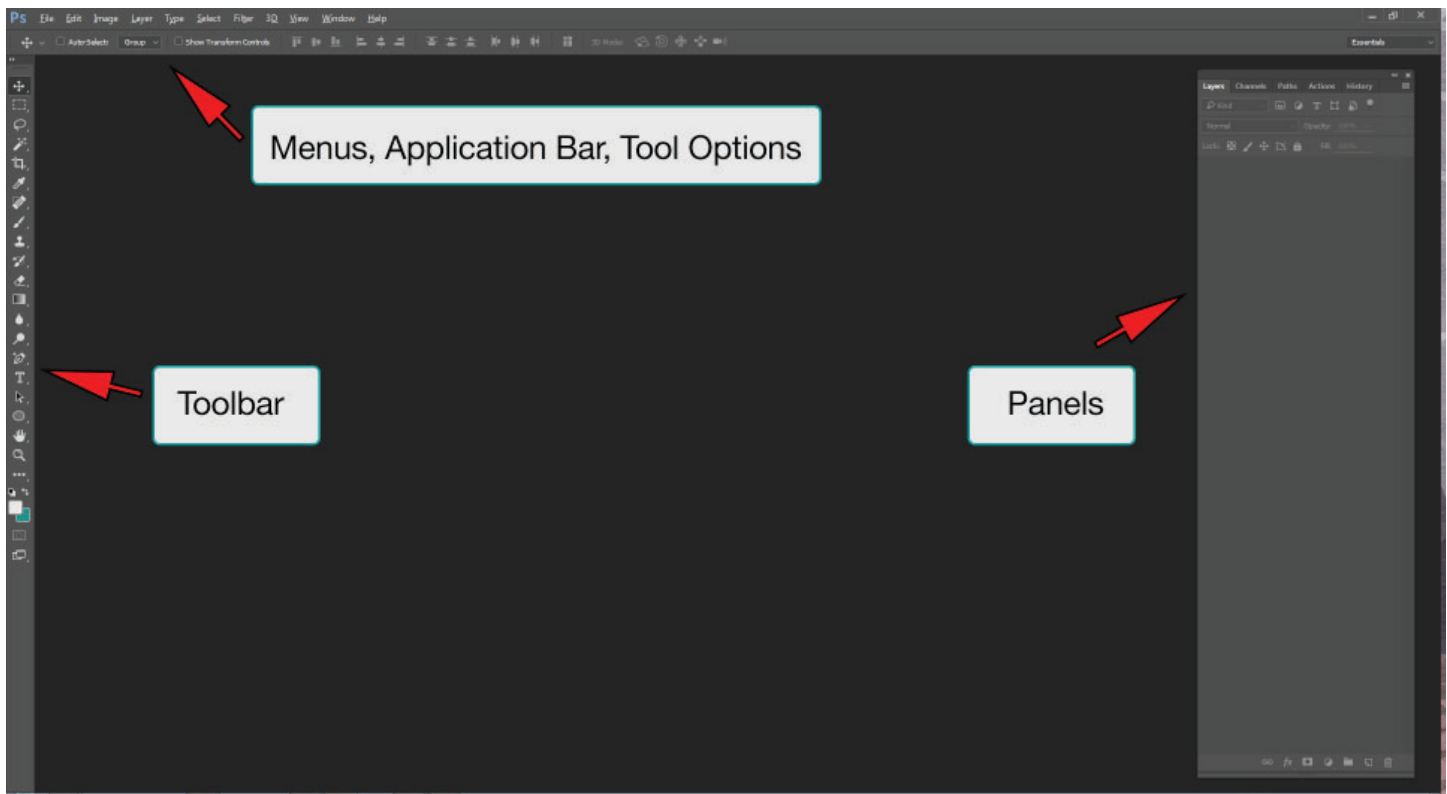


Adobe Photoshop - Quick Fixes



Menu Bar:

- File Menu > New >
- File Menu > Place Embedded
- Image Menu > Image Size
- Image Menu > Canvas Size
- Window Menu > Where your Panel windows are located
- Select > Inverse
- Select > Deselect

Toolbar

- Move Tool
- Magic Wand Tool
- Spot Healing Brush
- Brush Tool
- Clone Stamp Tool
- Text Tool
- Shape Tool
- Foreground/Background colors

Panels

- Layer Panel
- History Panel
- Color/Swatches Panel
- Character/Paragraph Panel
- Brush Panel

Adobe Photoshop - Quick Fixes

Make a folder on the desktop with your name

Go to <http://people.uncw.edu/adamsk>

Right click on the photo and “Save Image As” into your folder

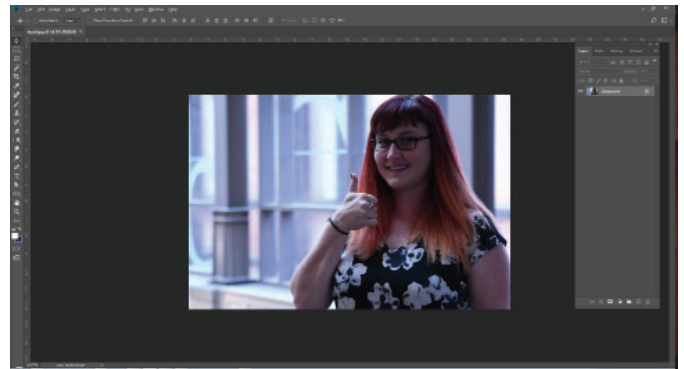
Open Photoshop

File > Open

Double click layer to unlock

File > Save As > PSD

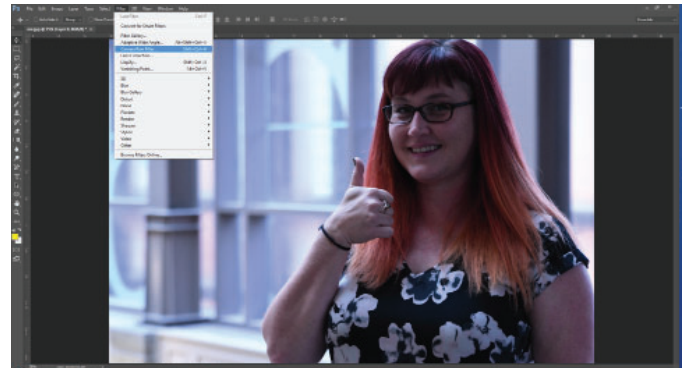
Use Ctrl+ and Ctrl- to zoom in and out



Photoshop Interface

Filter > Camera Raw Filter

- Play with the toggles
- First tab
 - Exposure - overall brightness/darkness
 - Highlights - white highlights
 - Shadows - middle greys
 - Clarity - softens the image details
 - Vibrance - brightens colors w/o weirdness
- Go to the HSL tab for Hue, Saturation
 - Are your cheeks too pink?
- Go to the Detail tab for smoothness
 - Luminance Detail gets rid of noise!
 - Smooth out those freckles!
- Once you get something you like, press “p” to view the before/after (or see bottom right)
- If good, hit OK



Filter > Camera Raw

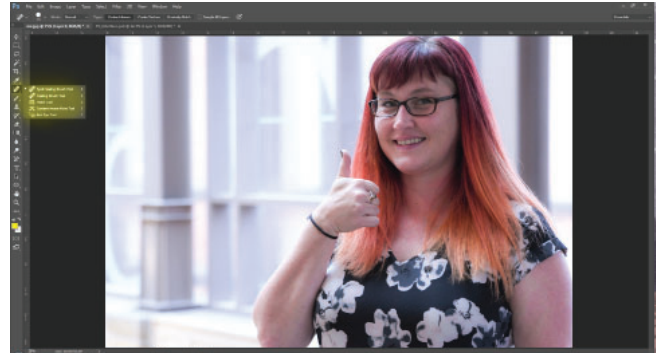


Filter > Camera Raw Interface

Adobe Photoshop - Quick Fixes

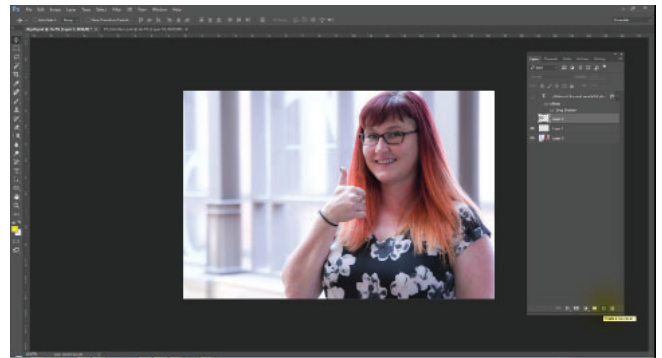
Toolbar > Spot Healing Brush

- Click on any blemishes



Spot Healing Brush

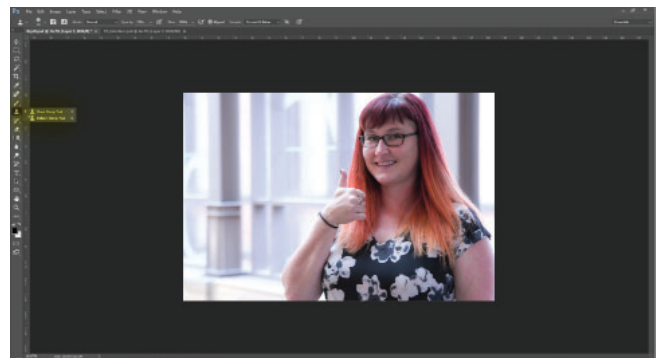
Layer > New Layer above



New Layer

Toolbar > Clone Stamp

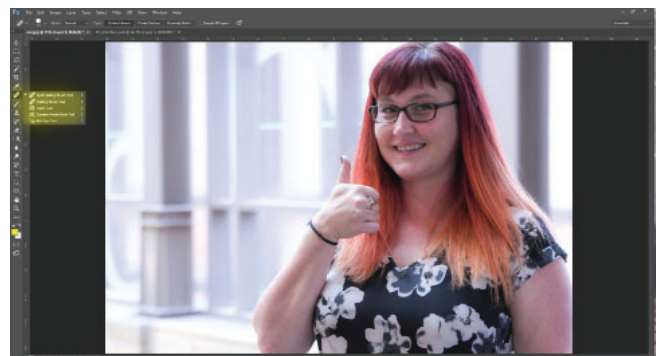
- Make sure Sample: Current & Below is chosen
- Check Opacity - 25% is natural looking
- ALT-click to select area you want to replicate, then Click on area you want to cover
- You may need resample to move around



Clone Stamp

Toolbar > Red Eye

- Just draw a little circle over the "red eye".

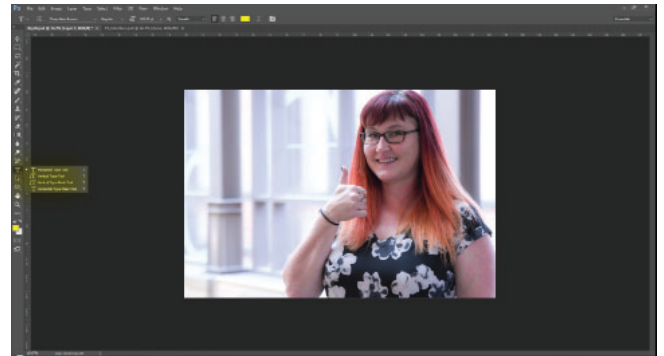


Red Eye

Adobe Photoshop - Quick Fixes

Toolbar > Text Tool

- Click and draw a text box, then type in it
- Check your font - Palatino or Times
- Check your color - White
- Check the Character Panel
- Check the Paragraph Panel for Hyphenation



Text Tool

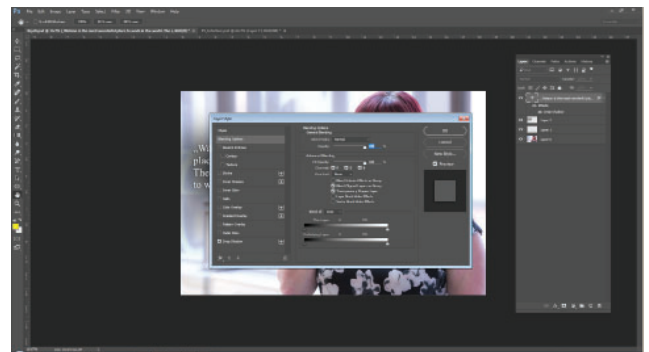
Let's jazz up our text a little more!

Double click on the text Layer for get Layer Styles

How to Save

File > Save for Web (SHIFT, ALT, CTRL S)

- Choose JPG for all photographs or art
- Choose GIF for solid color graphics
- Choose PNG if your background is transparent



Layer Styles

DPI / Resolution

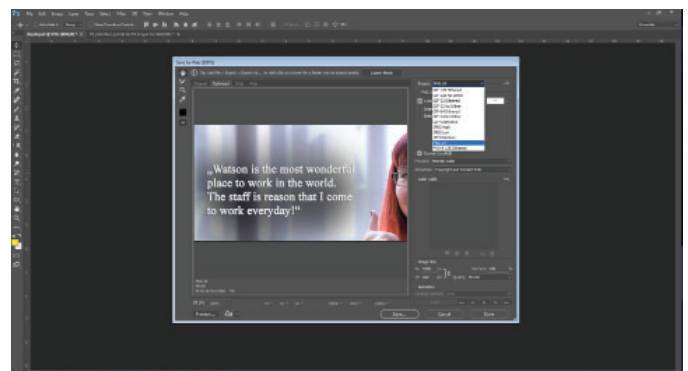
DPI stands for dots per inch, so basically, how many dots fill up a square inch?

- 72dpi - web
- 150 dpi - printing words
- 300+ dpi - printing photographs

Raster vs. Vector

Raster images are TIF, GIF, PNG, JPG - can't resize without distortion due to pixels.

Vector images are EPS, AI - can resize all the time because it's made of math!



Save As For Web